

Some useful resources for Learning Piano

1) Piano Lessons From Beginner To Advanced.

[Option 01 Click Here](#)

[Option 02 Click Here](#)

[Option 03 Click Here](#)

2) [Free Piano Song Learning App Click Here.](#)

Yaman Aroha Avaroha

म = तीव्र म

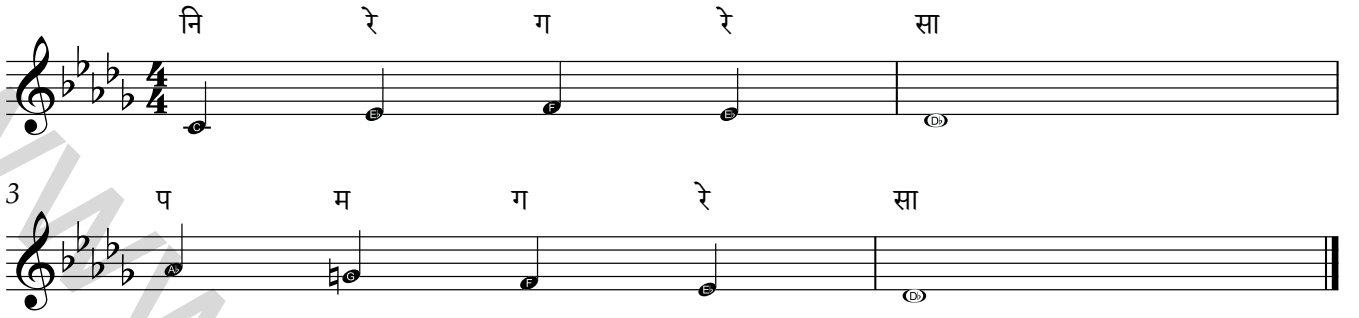
सा रे ग म प ध नि सा

3 सा नि ध प म ग रे सा

The image shows two staves of musical notation for the Yaman Aroha Avaroha scale. The first staff contains the notes सा, रे, ग, म, प, ध, नि, सा. The second staff contains the notes सा, नि, ध, प, म, ग, रे, सा. The notation is in 4/4 time and features a watermark 'www.pianomagics.com'.

Yaman Chalan - Pakad

म = तीव्र म



The image shows two staves of musical notation in 4/4 time, featuring a key signature of three flats (B-flat, E-flat, A-flat). The first staff contains the notes नि (Ni), रे (Re), ग (Ga), रे (Re), सा (Sa) with a fermata over the final note. The second staff starts with a '3' indicating a triplet, followed by the notes प (Pa), म (Ma), ग (Ga), रे (Re), सा (Sa) with a fermata over the final note. A large watermark 'www.pianomagics.com' is overlaid diagonally across the page.

Yaman Sargam Geet

म = तीव्र म

नि रे नि ग रे म ग प

3 रे ग रे नि रे सा नि ध

5 नि रे ग म प म ग

7 रे सा नि सा ग म ध नि

9 म ध नि सा ध नि रे ग

11 रे सा ग म ध नि ग म

13 ध नि ग म ध नि सा नि

15 ध प सा नि ध प सा नि

17 ध प म ग रे सा

Yaman Lakshan Geet

म = तीव्र म

सा सा ध नि

3 ध प प म

5 ग प प प

7 सा सा ध नि

9 ध प प म

11 ग प प प

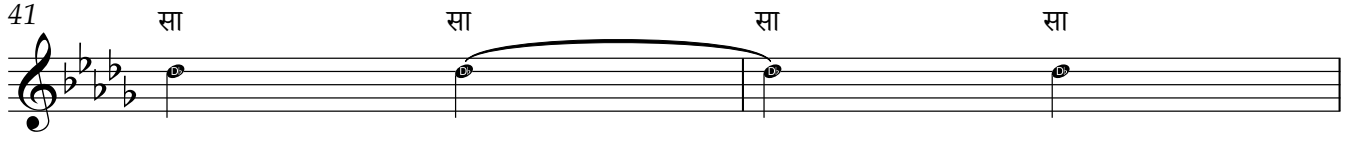
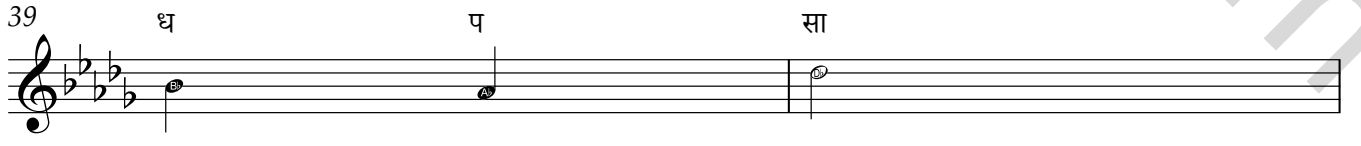
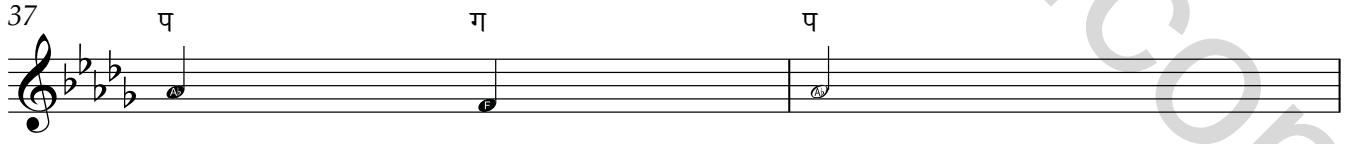
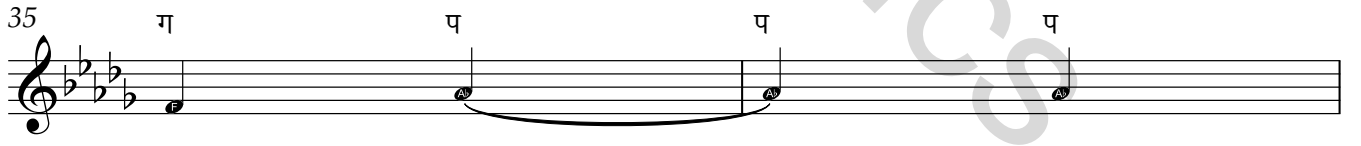
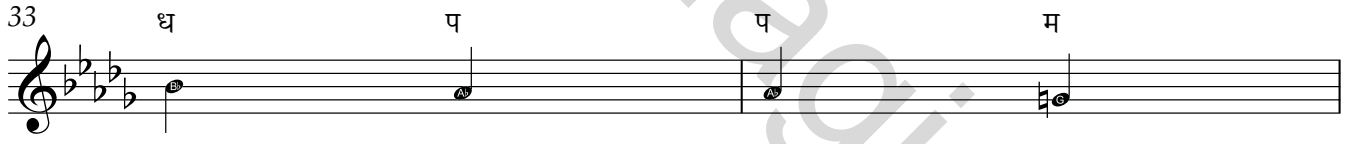
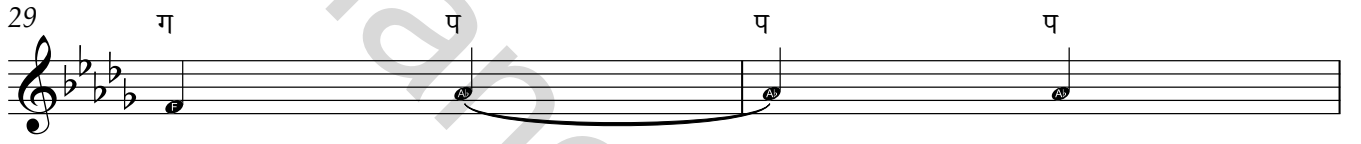
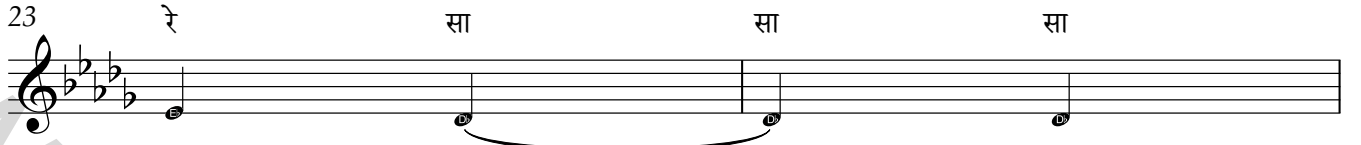
13 ग ग रे

15 ग प रे ग

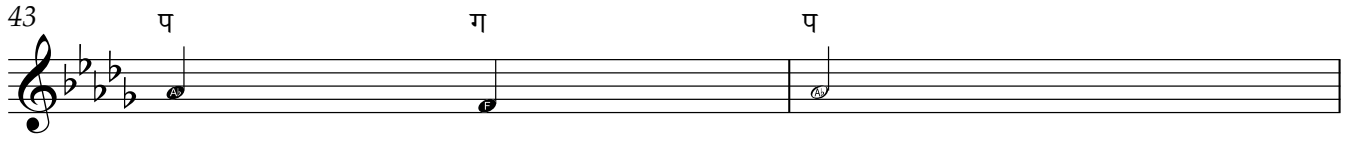
17 रे सा सा सा

19 ग ग रे

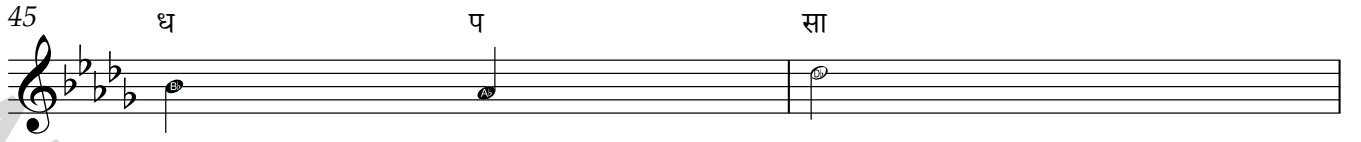
2



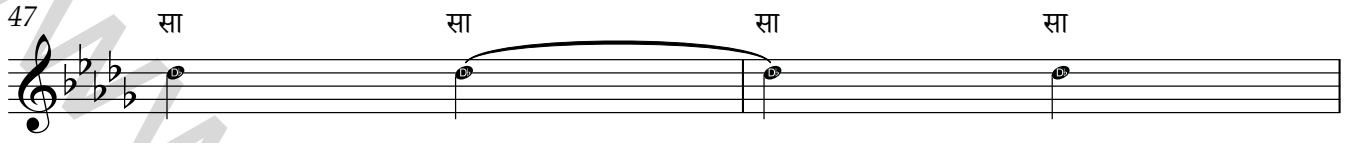
43 प ग प



45 ध प सा



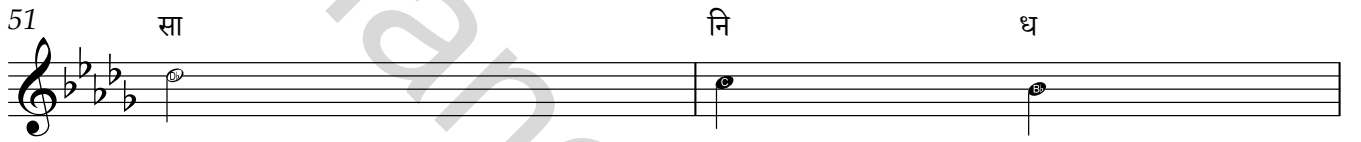
47 सा सा सा सा



49 नि रे ग रे



51 सा नि ध



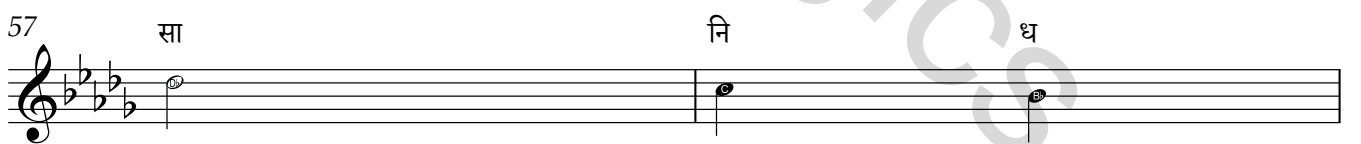
53 नि प प प



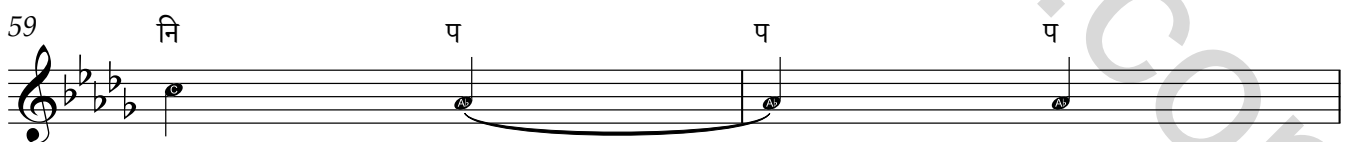
55 नि रे ग रे



57 सा नि ध



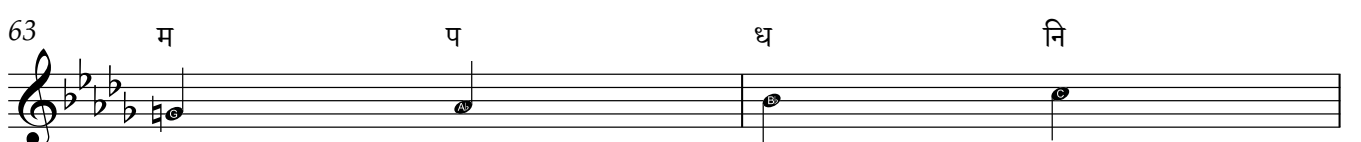
59 नि प प प



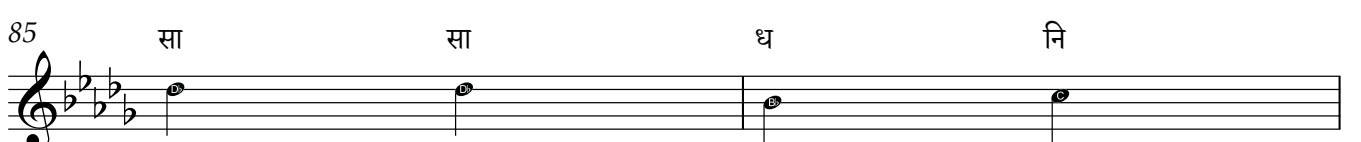
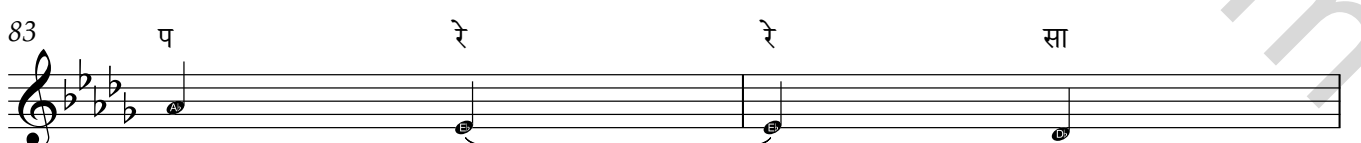
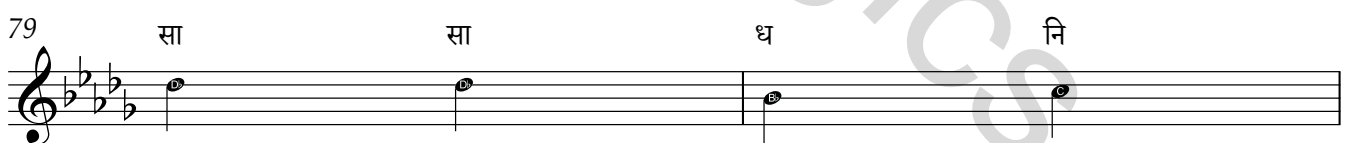
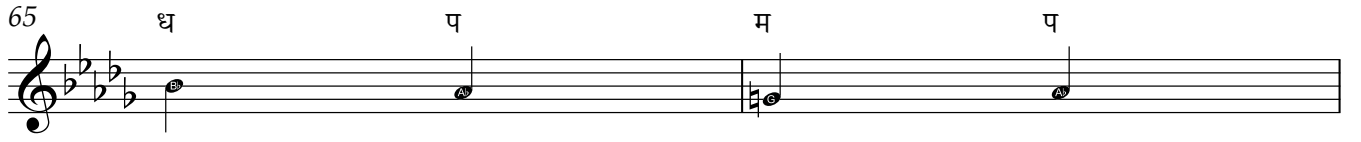
61 प ग प प



63 म प ध नि



4

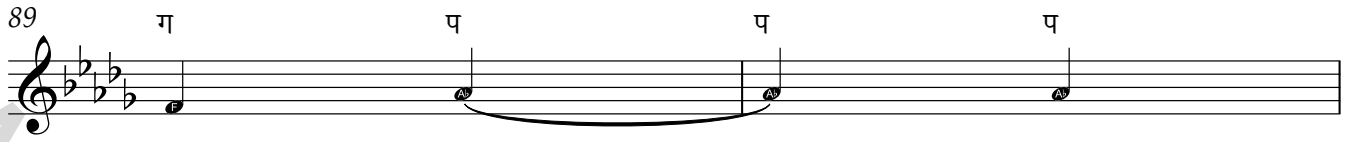


87 ध प प म



A musical staff in treble clef with a key signature of three flats (B-flat, E-flat, A-flat) and a common time signature. The staff contains four measures of music. The first measure has a whole note G4. The second measure has a whole note A4. The third measure has a whole note B4. The fourth measure has a whole note C5. The notes are labeled with the Hindi characters 'ध', 'प', 'प', and 'म' above them.

89 ग प प प




A musical staff in treble clef with a key signature of three flats and a common time signature. The staff contains four measures of music. The first measure has a whole note G4. The second measure has a whole note A4. The third measure has a whole note B4. The fourth measure has a whole note C5. The notes are labeled with the Hindi characters 'ग', 'प', 'प', and 'प' above them.

91 सा सा ध नि



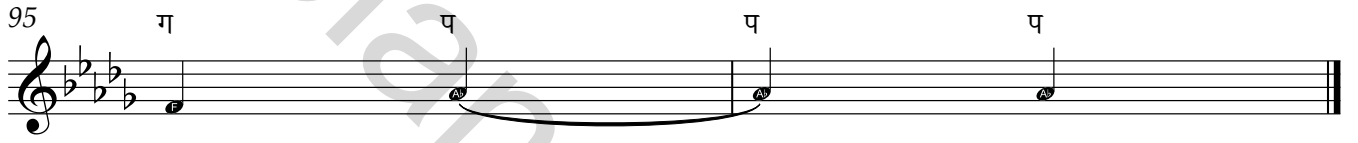
A musical staff in treble clef with a key signature of three flats and a common time signature. The staff contains four measures of music. The first measure has a whole note G4. The second measure has a whole note A4. The third measure has a whole note B4. The fourth measure has a whole note C5. The notes are labeled with the Hindi characters 'सा', 'सा', 'ध', and 'नि' above them.

93 ध प प म



A musical staff in treble clef with a key signature of three flats and a common time signature. The staff contains four measures of music. The first measure has a whole note G4. The second measure has a whole note A4. The third measure has a whole note B4. The fourth measure has a whole note C5. The notes are labeled with the Hindi characters 'ध', 'प', 'प', and 'म' above them.

95 ग प प प



A musical staff in treble clef with a key signature of three flats and a common time signature. The staff contains four measures of music. The first measure has a whole note G4. The second measure has a whole note A4. The third measure has a whole note B4. The fourth measure has a whole note C5. The notes are labeled with the Hindi characters 'ग', 'प', 'प', and 'प' above them.

Yaman Ari Ali

म = तीव्र म

नि ध नि प रे सा

3 ग रे प ग ग ग प

5 नि ध नि प रे सा

7 ग रे प ग ग ग प

9 ग ग प प म ध म प

11 नि ध प म रे रे सा सा

13 ग ग प प म ध म प

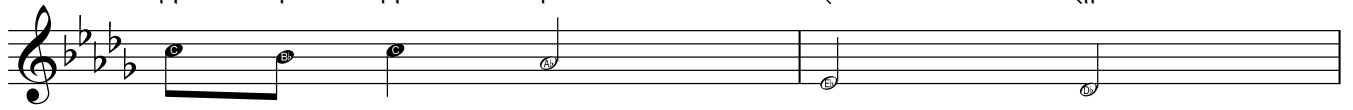
15 नि ध प म रे रे सा सा

17 नि ध नि प रे सा

19 ग रे प ग ग ग प

2

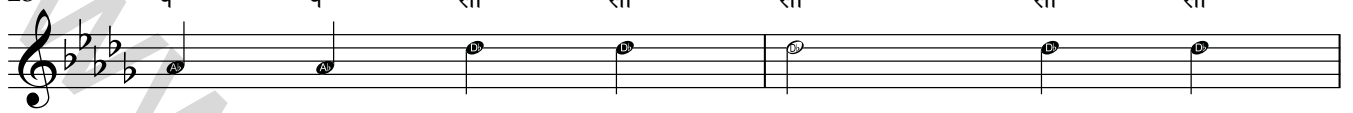
21 नि ध नि प रे सा

A musical staff in treble clef with a key signature of three flats (B-flat, E-flat, A-flat). The melody consists of quarter notes: नि (G4), ध (A4), नि (G4), प (F4), रे (E4), and सा (D4).


23 ग रे प ग ग ग प

A musical staff in treble clef with a key signature of three flats. The melody consists of quarter notes: ग (F4), रे (E4), प (D4), ग (F4), ग (F4), ग (F4), and प (D4).

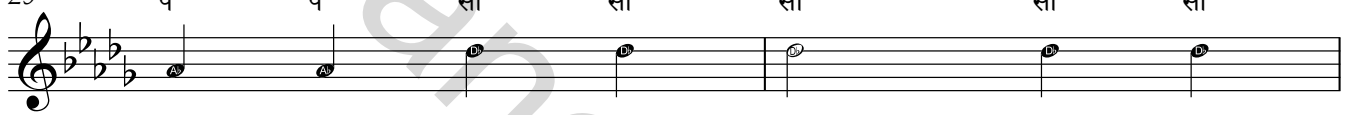
25 प प सा सा सा सा सा

A musical staff in treble clef with a key signature of three flats. The melody consists of quarter notes: प (D4), प (D4), सा (E4), सा (E4), सा (E4), सा (E4), and सा (E4).

27 सा नि ध नि रे सा सा

A musical staff in treble clef with a key signature of three flats. The melody consists of quarter notes: सा (D4), नि (G4), ध (A4), नि (G4), रे (E4), सा (D4), and सा (D4).

29 प प सा सा सा सा सा

A musical staff in treble clef with a key signature of three flats. The melody consists of quarter notes: प (D4), प (D4), सा (E4), सा (E4), सा (E4), सा (E4), and सा (E4).

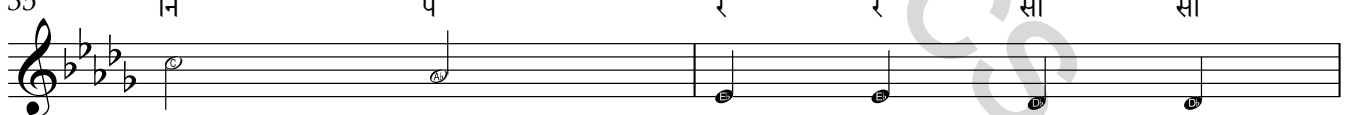
31 सा नि ध नि रे सा सा

A musical staff in treble clef with a key signature of three flats. The melody consists of quarter notes: सा (D4), नि (G4), ध (A4), नि (G4), रे (E4), सा (D4), and सा (D4).

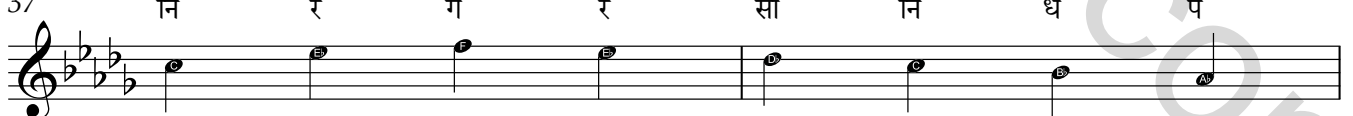
33 नि रे ग रे सा नि ध प

A musical staff in treble clef with a key signature of three flats. The melody consists of quarter notes: नि (G4), रे (E4), ग (F4), रे (E4), सा (D4), नि (G4), ध (A4), and प (F4).


35 नि प रे रे सा सा

A musical staff in treble clef with a key signature of three flats. The melody consists of quarter notes: नि (G4), प (D4), रे (E4), रे (E4), सा (D4), and सा (D4).

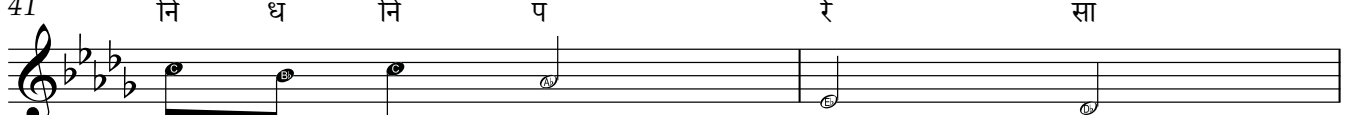
37 नि रे ग रे सा नि ध प

A musical staff in treble clef with a key signature of three flats. The melody consists of quarter notes: नि (G4), रे (E4), ग (F4), रे (E4), सा (D4), नि (G4), ध (A4), and प (F4).

39 नि प रे रे सा सा

A musical staff in treble clef with a key signature of three flats. The melody consists of quarter notes: नि (G4), प (D4), रे (E4), रे (E4), सा (D4), and सा (D4).

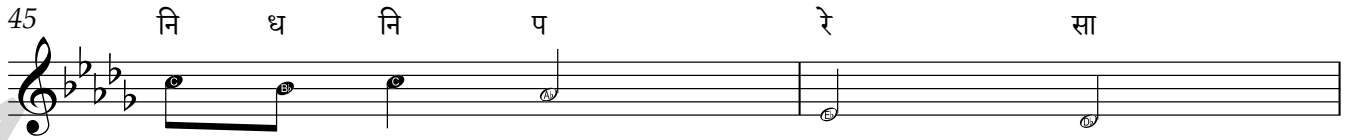
41 नि ध नि प रे सा

A musical staff in treble clef with a key signature of three flats. The melody consists of quarter notes: नि (G4), ध (A4), नि (G4), प (F4), रे (E4), and सा (D4).

43 ग रे प ग ग ग प

Musical notation for line 43, featuring a treble clef, a key signature of three flats (B-flat, E-flat, A-flat), and a 4/4 time signature. The melody consists of quarter notes: G4, A4, B-flat4, C5, D5, E5, F5, G5.

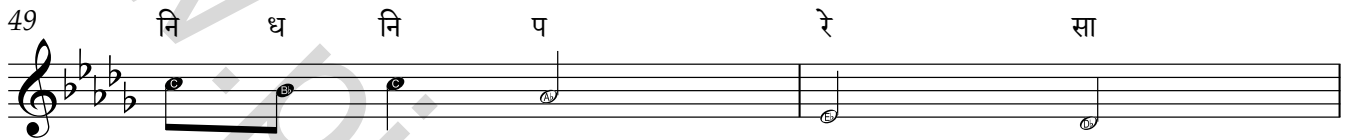
45 नि ध नि प रे सा

Musical notation for line 45, featuring a treble clef, a key signature of three flats, and a 4/4 time signature. The melody consists of quarter notes: G4, A4, B-flat4, C5, D5, E5, F5, G5.

47 ग रे प ग ग ग प

Musical notation for line 47, featuring a treble clef, a key signature of three flats, and a 4/4 time signature. The melody consists of quarter notes: G4, A4, B-flat4, C5, D5, E5, F5, G5.

49 नि ध नि प रे सा

Musical notation for line 49, featuring a treble clef, a key signature of three flats, and a 4/4 time signature. The melody consists of quarter notes: G4, A4, B-flat4, C5, D5, E5, F5, G5.

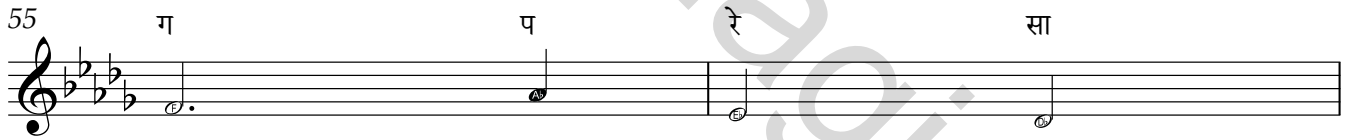
51 ग रे प ग ग ग प

Musical notation for line 51, featuring a treble clef, a key signature of three flats, and a 4/4 time signature. The melody consists of quarter notes: G4, A4, B-flat4, C5, D5, E5, F5, G5.

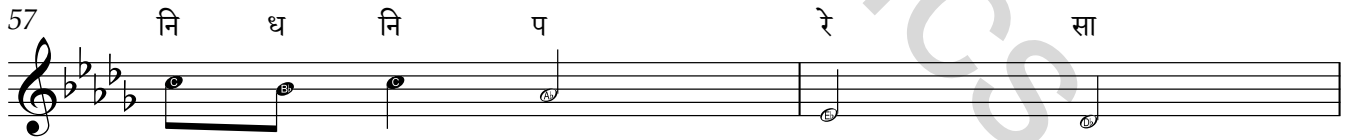
53 ग ग रे नि रे

Musical notation for line 53, featuring a treble clef, a key signature of three flats, and a 4/4 time signature. The melody consists of quarter notes: G4, G4, A4, B-flat4, C5, D5, E5, F5.

55 ग प रे सा

Musical notation for line 55, featuring a treble clef, a key signature of three flats, and a 4/4 time signature. The melody consists of quarter notes: G4, A4, B-flat4, C5, D5, E5, F5, G5.

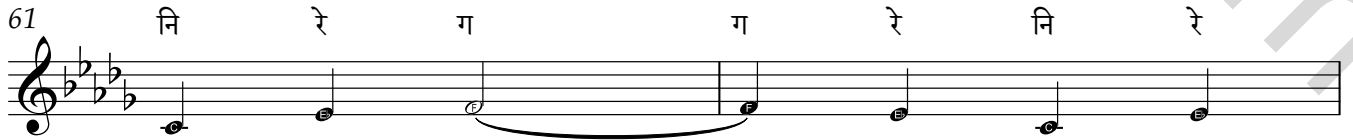
57 नि ध नि प रे सा

Musical notation for line 57, featuring a treble clef, a key signature of three flats, and a 4/4 time signature. The melody consists of quarter notes: G4, A4, B-flat4, C5, D5, E5, F5, G5.

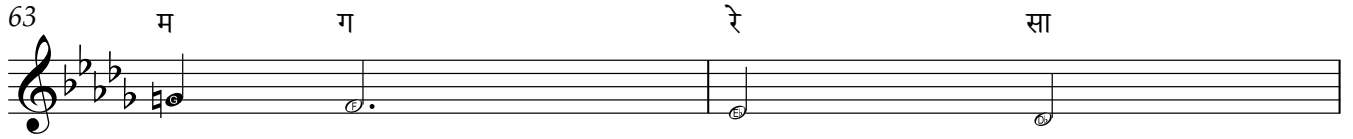
59 ग रे प ग ग ग प

Musical notation for line 59, featuring a treble clef, a key signature of three flats, and a 4/4 time signature. The melody consists of quarter notes: G4, A4, B-flat4, C5, D5, E5, F5, G5.

61 नि रे ग ग रे नि रे

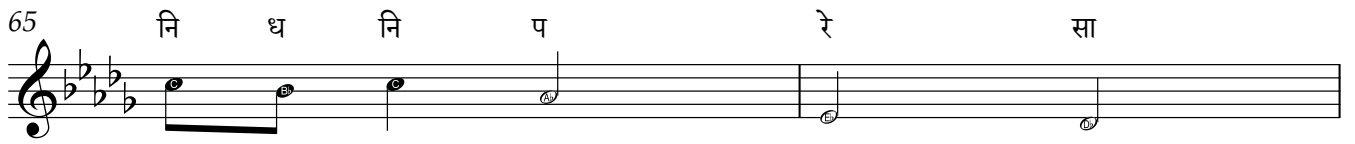
Musical notation for line 61, featuring a treble clef, a key signature of three flats, and a 4/4 time signature. The melody consists of quarter notes: G4, A4, B-flat4, C5, D5, E5, F5, G5.

63 म ग रे सा

Musical notation for line 63, featuring a treble clef, a key signature of three flats, and a 4/4 time signature. The melody consists of quarter notes: G4, A4, B-flat4, C5, D5, E5, F5, G5.

4

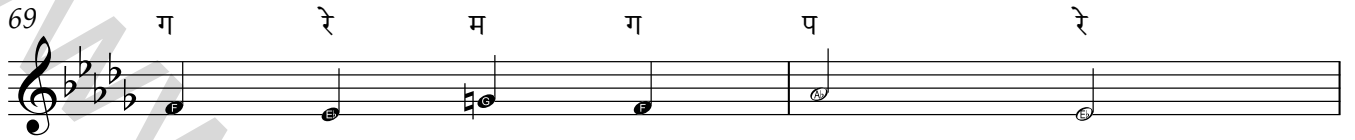
65 नि ध नि प रे सा



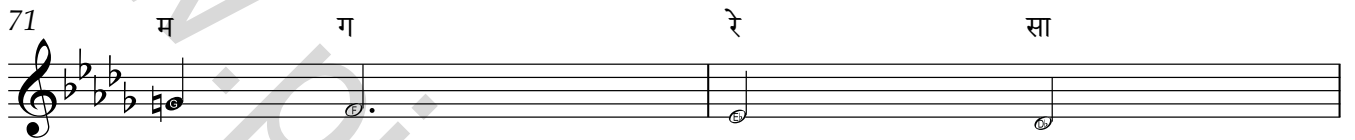
67 ग रे प ग ग ग प



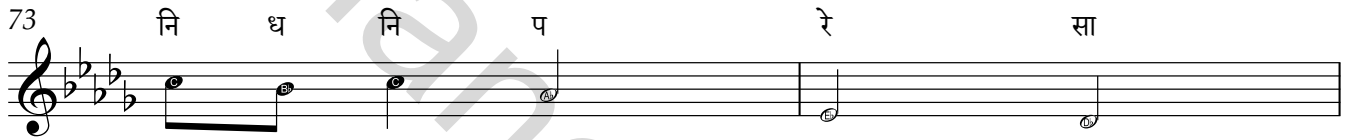
69 ग रे म ग प रे



71 म ग रे सा



73 नि ध नि प रे सा



75 ग रे प ग ग ग प



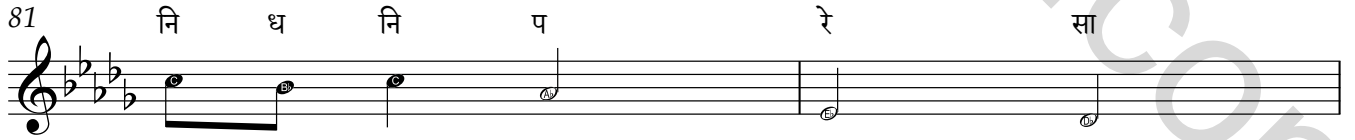
77 नि रे ग म प ग म ध नि सा



79 नि प रे ग रे सा



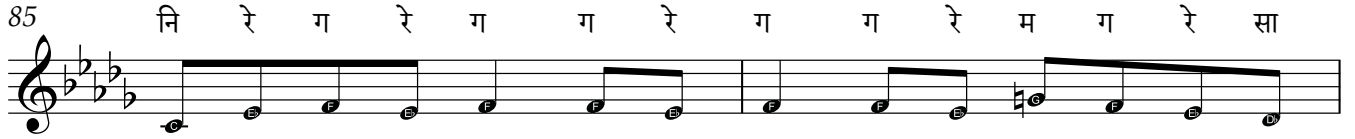
81 नि ध नि प रे सा




83 ग रे प ग ग ग प



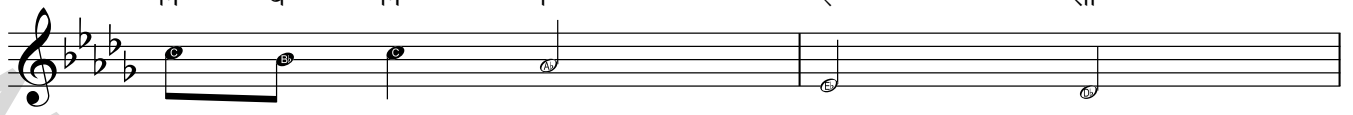
85 नि रे ग रे ग ग रे ग ग रे म ग रे सा




87 प म ग रे ग रे ग म ग रे सा नि रे सा

Musical notation for line 87, featuring a treble clef, a key signature of three flats (B-flat, E-flat, A-flat), and a 4/4 time signature. The melody consists of quarter and eighth notes.


89 नि ध नि प रे सा

Musical notation for line 89, featuring a treble clef, a key signature of three flats, and a 4/4 time signature. The melody consists of quarter and eighth notes.


91 ग रे प ग ग ग प

Musical notation for line 91, featuring a treble clef, a key signature of three flats, and a 4/4 time signature. The melody consists of quarter and eighth notes.

93 नि रे ग म ग प म ग ध प म ग रे ग

Musical notation for line 93, featuring a treble clef, a key signature of three flats, and a 4/4 time signature. The melody consists of quarter and eighth notes.

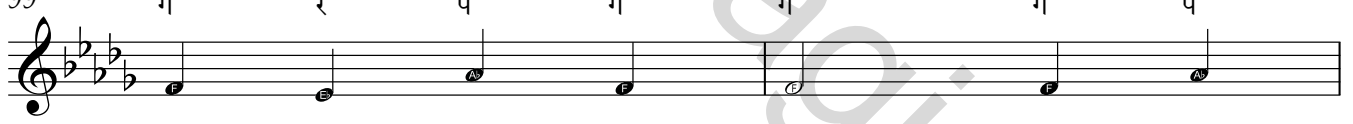
95 नि नि ध प ध ध प म प रे ग नि रे सा

Musical notation for line 95, featuring a treble clef, a key signature of three flats, and a 4/4 time signature. The melody consists of quarter and eighth notes.

97 नि ध नि प रे सा

Musical notation for line 97, featuring a treble clef, a key signature of three flats, and a 4/4 time signature. The melody consists of quarter and eighth notes.


99 ग रे प ग ग ग प

Musical notation for line 99, featuring a treble clef, a key signature of three flats, and a 4/4 time signature. The melody consists of quarter and eighth notes.

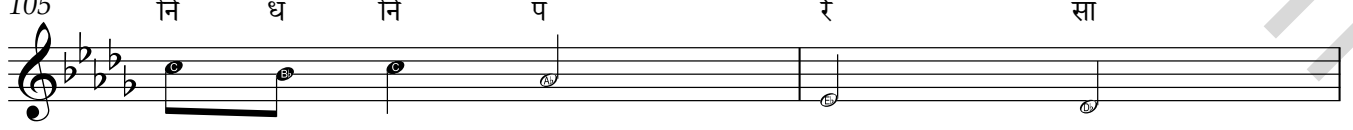
101 ग रे ग रे म ग म ग प रे ग नि रे सा

Musical notation for line 101, featuring a treble clef, a key signature of three flats, and a 4/4 time signature. The melody consists of quarter and eighth notes.

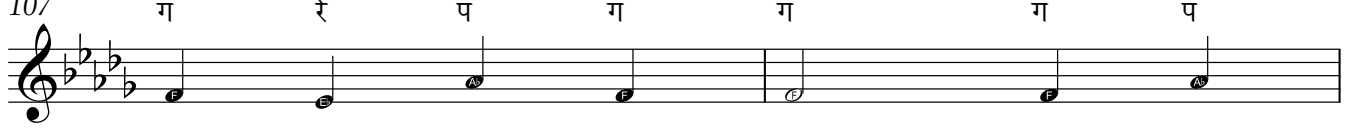
103 प रे ग नि रे सा ग म ध नि म ध नि सा

Musical notation for line 103, featuring a treble clef, a key signature of three flats, and a 4/4 time signature. The melody consists of quarter and eighth notes.

105 नि ध नि प रे सा

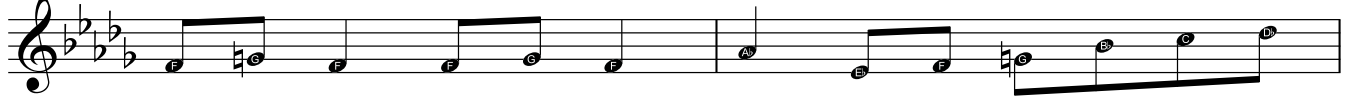
Musical notation for line 105, featuring a treble clef, a key signature of three flats, and a 4/4 time signature. The melody consists of quarter and eighth notes.

107 ग रे प ग ग ग प

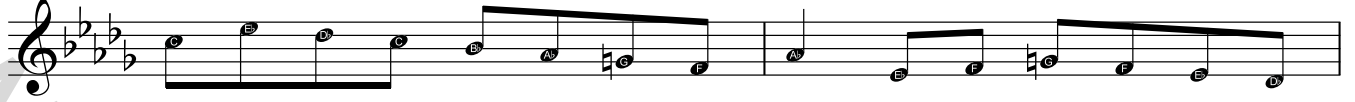
Musical notation for line 107, featuring a treble clef, a key signature of three flats, and a 4/4 time signature. The melody consists of quarter and eighth notes.

6

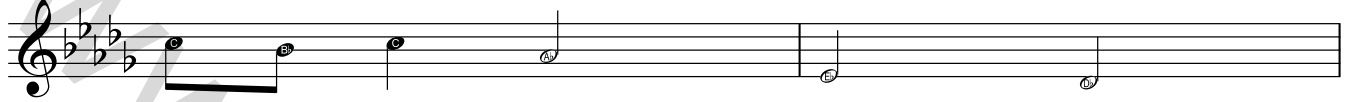
109 ग म ग ग म ग प रे ग म ध नि सा

Musical notation for line 109, featuring a treble clef, a key signature of three flats (B-flat, E-flat, A-flat), and a 4/4 time signature. The melody consists of quarter notes and half notes, with a final measure containing a whole note.

111 नि रे सा नि ध प म ग प रे ग म ग रे सा

Musical notation for line 111, continuing the melody with quarter notes and half notes, including a measure with a whole note.

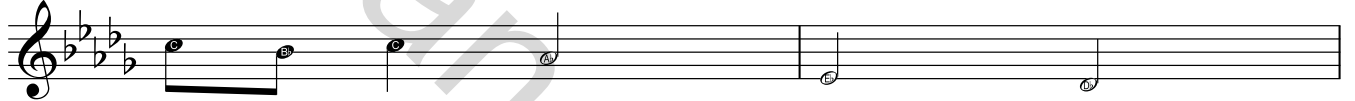
113 नि ध नि प रे सा

Musical notation for line 113, featuring a treble clef, a key signature of three flats, and a 4/4 time signature. The melody consists of quarter notes and half notes, with a final measure containing a whole note.

115 ग रे प ग ग ग प

Musical notation for line 115, featuring a treble clef, a key signature of three flats, and a 4/4 time signature. The melody consists of quarter notes and half notes, with a final measure containing a whole note.

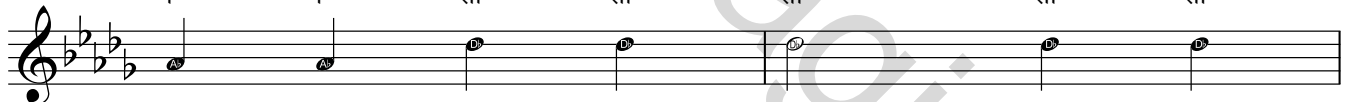
117 नि ध नि प रे सा

Musical notation for line 117, featuring a treble clef, a key signature of three flats, and a 4/4 time signature. The melody consists of quarter notes and half notes, with a final measure containing a whole note.

119 ग रे प ग ग ग प

Musical notation for line 119, featuring a treble clef, a key signature of three flats, and a 4/4 time signature. The melody consists of quarter notes and half notes, with a final measure containing a whole note.

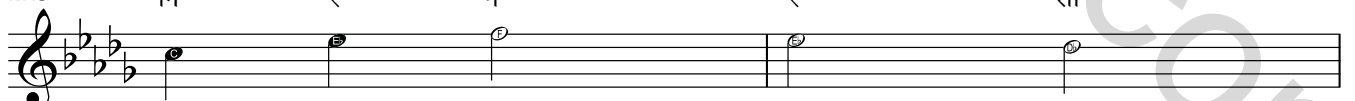
121 प प सा सा सा सा सा

Musical notation for line 121, featuring a treble clef, a key signature of three flats, and a 4/4 time signature. The melody consists of quarter notes and half notes, with a final measure containing a whole note.


123 सा नि ध नि रे सा सा

Musical notation for line 123, featuring a treble clef, a key signature of three flats, and a 4/4 time signature. The melody consists of quarter notes and half notes, with a final measure containing a whole note.

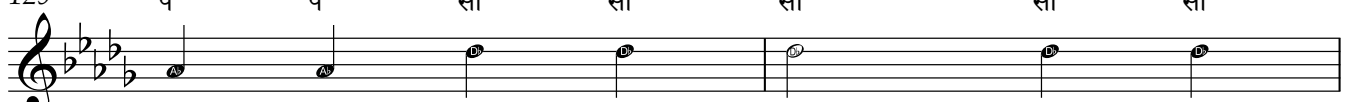
125 नि रे ग रे सा

Musical notation for line 125, featuring a treble clef, a key signature of three flats, and a 4/4 time signature. The melody consists of quarter notes and half notes, with a final measure containing a whole note.

127 नि ध प म ग म ध नि सा

Musical notation for line 127, featuring a treble clef, a key signature of three flats, and a 4/4 time signature. The melody consists of quarter notes and half notes, with a final measure containing a whole note.

129 प प सा सा सा सा सा

Musical notation for line 129, featuring a treble clef, a key signature of three flats, and a 4/4 time signature. The melody consists of quarter notes and half notes, with a final measure containing a whole note.

131 सा नि ध नि रे सा सा

133 ग रे सा नि ध नि

135 म ध नि ग म ध नि सा

137 प प सा सा सा सा सा

139 सा नि ध नि रे सा सा

141 नि रे ध नि म ध ग म

143 रे ग नि रे ग म ध नि सा

145 प प सा सा सा सा सा

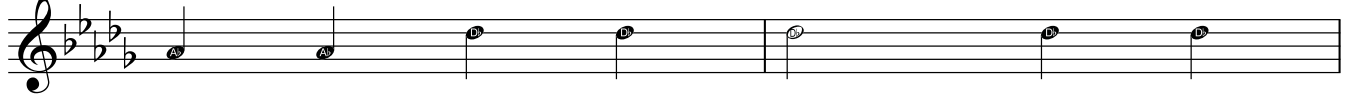
147 सा नि ध नि रे सा सा

149 नि रे ग म ध प

151 नि रे सा प म ग रे सा


8

153 प प सा सा सा सा सा



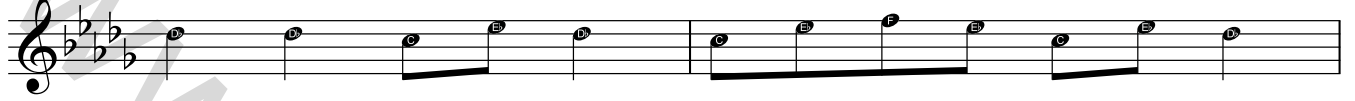
A musical staff in treble clef with a key signature of three flats (B-flat, E-flat, A-flat). The melody consists of quarter notes: P (Pa), P (Pa), Sa (Sa), Sa (Sa), Sa (Sa), Sa (Sa), Sa (Sa).

155 सा नि ध नि रे सा सा



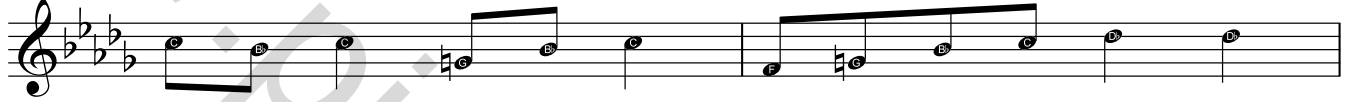
A musical staff in treble clef with a key signature of three flats. The melody consists of quarter notes: Sa (Sa), Ni (Ni), Dh (Dha), Ni (Ni), Re (Re), Sa (Sa), Sa (Sa).

157 सा सा नि रे सा नि रे ग रे नि रे सा



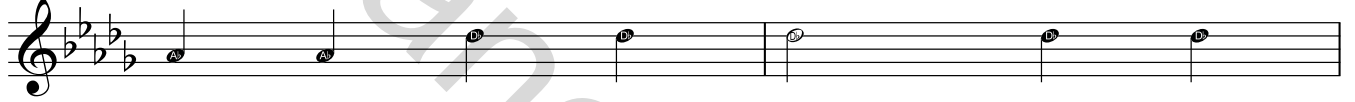
A musical staff in treble clef with a key signature of three flats. The melody consists of quarter notes: Sa (Sa), Sa (Sa), Ni (Ni), Re (Re), Sa (Sa), Ni (Ni), Re (Re), Ga (Ga), Re (Re), Ni (Ni), Re (Re), Sa (Sa).

159 नि ध नि म ध नि ग म ध नि सा सा



A musical staff in treble clef with a key signature of three flats. The melody consists of quarter notes: Ni (Ni), Dh (Dha), Ni (Ni), Ma (Ma), Dh (Dha), Ni (Ni), Ga (Ga), Ma (Ma), Dh (Dha), Ni (Ni), Sa (Sa), Sa (Sa).

161 प प सा सा सा सा सा




A musical staff in treble clef with a key signature of three flats. The melody consists of quarter notes: P (Pa), P (Pa), Sa (Sa), Sa (Sa), Sa (Sa), Sa (Sa), Sa (Sa).

163 सा नि ध नि रे सा सा



A musical staff in treble clef with a key signature of three flats. The melody consists of quarter notes: Sa (Sa), Ni (Ni), Dh (Dha), Ni (Ni), Re (Re), Sa (Sa), Sa (Sa).

165 सा नि ध प म ग रे सा ग म ध नि सा सा



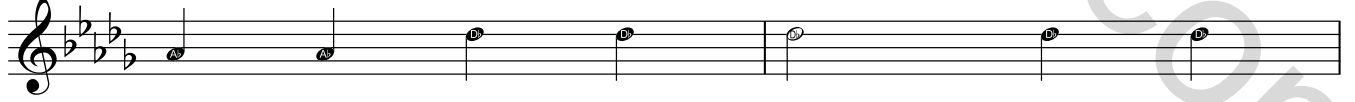
A musical staff in treble clef with a key signature of three flats. The melody consists of quarter notes: Sa (Sa), Ni (Ni), Dh (Dha), Pa (Pa), Ma (Ma), Ga (Ga), Re (Re), Sa (Sa), Ga (Ga), Ma (Ma), Dh (Dha), Ni (Ni), Sa (Sa), Sa (Sa).

167 ग म ध नि सा सा ग म ध नि सा सा




A musical staff in treble clef with a key signature of three flats. The melody consists of quarter notes: Ga (Ga), Ma (Ma), Dh (Dha), Ni (Ni), Sa (Sa), Sa (Sa), Ga (Ga), Ma (Ma), Dh (Dha), Ni (Ni), Sa (Sa), Sa (Sa).

169 प प सा सा सा सा सा



A musical staff in treble clef with a key signature of three flats. The melody consists of quarter notes: P (Pa), P (Pa), Sa (Sa), Sa (Sa), Sa (Sa), Sa (Sa), Sa (Sa).

171 सा नि ध नि रे सा सा



A musical staff in treble clef with a key signature of three flats. The melody consists of quarter notes: Sa (Sa), Ni (Ni), Dh (Dha), Ni (Ni), Re (Re), Sa (Sa), Sa (Sa).

173 नि रे ग नि रे सा नि ध प म ग रे सा

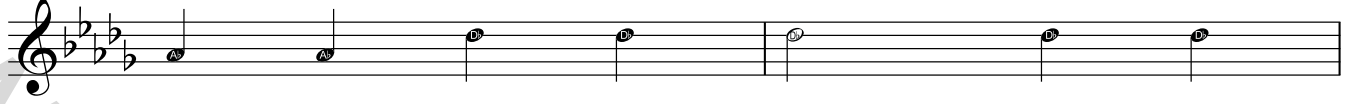


A musical staff in treble clef with a key signature of three flats. The melody consists of quarter notes: Ni (Ni), Re (Re), Ga (Ga), Ni (Ni), Re (Re), Sa (Sa), Ni (Ni), Dh (Dha), Pa (Pa), Ma (Ma), Ga (Ga), Re (Re), Sa (Sa).


175 नि रे ग रे रे ग म ग ग म ध म ध नि सा



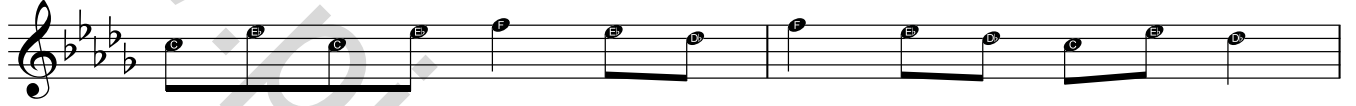
177 प प सा सा सा सा सा



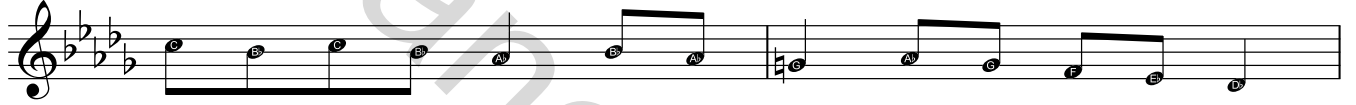
179 सा नि ध नि रे सा सा



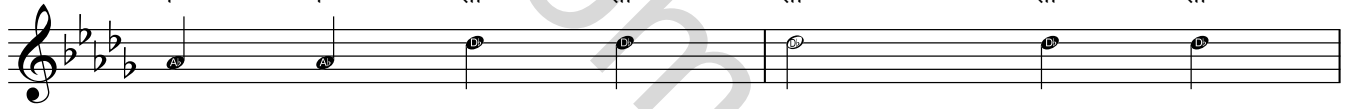
181 नि रे नि रे ग रे सा ग रे सा नि रे सा




183 नि ध नि ध प ध प म प म ग रे सा



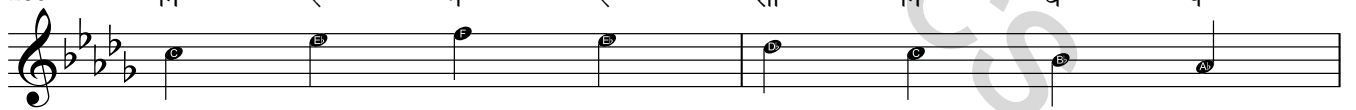
185 प प सा सा सा सा सा




187 सा नि ध नि रे सा सा



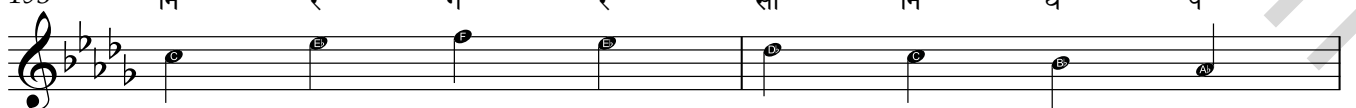
189 नि रे ग रे सा नि ध प




191 नि प रे रे सा सा



193 नि रे ग रे सा नि ध प



195 नि प रे रे सा सा



10

197 नि ध नि प रे सा

199 ग रे प ग ग ग प

201 नि ध नि प रे सा

203 नि ध नि प रे सा

205 नि ध नि प रे सा

Yaman Shankara Girijadhara

म = तीव्र म

ग रे ग प रे ग ग रे सा नि ध

3 नि रे ग म प नि रे सा नि प रे ग प रे ग रे सा

5 ग रे ग प रे ग ग रे सा नि ध

7 नि रे ग म प नि रे सा नि प रे ग प रे ग रे सा

9 ग म ध नि नि नि म ध नि सा नि ध नि नि नि

11 नि रे नि ग रे सा सा नि ध नि ध प प

13 ग म ध नि नि नि म ध नि सा नि ध नि नि नि

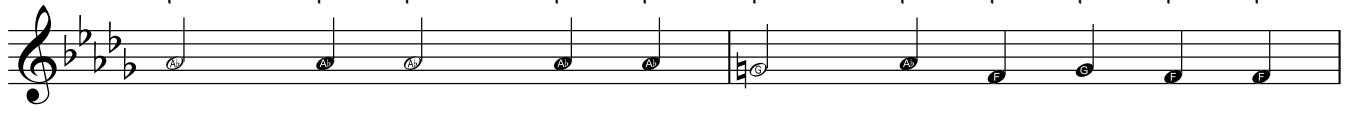
15 नि रे नि ग रे सा सा नि ध नि ध प प

17 प प प प प म प ग म ग ग


19 सा नि प रे रे प प रे ग रे सा

2

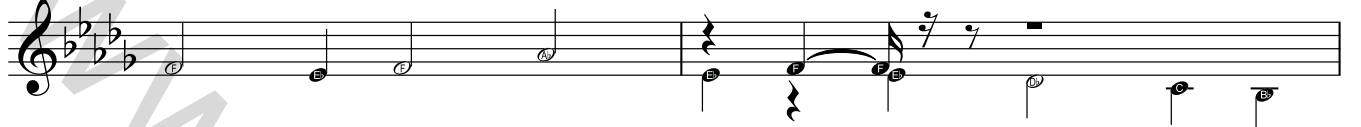
21 प प प प प म प ग म ग ग

Musical notation for line 21, featuring a treble clef, a key signature of three flats (B-flat, E-flat, A-flat), and a 4/4 time signature. The melody consists of quarter notes: P, P, P, P, P, M, P, G, M, G, G.

23 सा नि प रे रे प प रे ग रे सा

Musical notation for line 23, featuring a treble clef, a key signature of three flats, and a 4/4 time signature. The melody consists of quarter notes: S, N, P, R, R, P, P, R, G, R, S.

25 ग रे ग प रे ग ग रे सा नि ध

Musical notation for line 25, featuring a treble clef, a key signature of three flats, and a 4/4 time signature. The melody consists of quarter notes: G, R, G, P, R, G, G, R, S, N, D.

27 नि रे ग म प नि रे सा नि प रे ग प रे ग रे सा

Musical notation for line 27, featuring a treble clef, a key signature of three flats, and a 4/4 time signature. The melody consists of quarter notes: N, R, G, M, P, N, R, S, N, P, R, G, P, R, G, R, S.